

# The Carillon

## February 2007

### PRESBYTERIAN CHURCH OF BARRINGTON

A welcoming, caring family of faith

#### Come Observe Lent at PCB ---Lenten Services and Classes

##### Inside this issue:

Vision Statement.....	2
Becoming a Church Member.....	2
Dr. Baxter's Letter.....	2
Stephen Ministry.....	3
ChristCare.....	3
BPW.....	4
Deacons.....	5
Condolences.....	5
Mission.....	5
Christian Education.....	6
Fellowship.....	9
Music.....	10
Parish Life.....	11
Church Administration.....	11
Worship Schedule/Staff.....	12
Church Officers.....	i-1
Calendar.....	i-2,3
Birthdays/Hospitality.....	i-4

**A**sh Wednesday is February 21. A service with imposition of ashes will be held at 7:00 p.m., led by our 7<sup>th</sup> and 8<sup>th</sup> graders. Wednesday Night Live (Grades Kindergarten through 6) will have a “Lent Event” starting at 5:15 p.m.

**Taizé Services** will be held on Wednesdays, February 28, March 7, 14 and 21 from 7:00 – 7:45 p.m. This worship service takes the form of meditative common prayer. Gathered in the presence of Christ, we sing uncomplicated repetitive songs, uncluttered by too many words, allowing the mystery of God to become tangible through the beauty of simplicity.

**Classes** will be held on Wednesdays, February 28, March 7, 14, and 21 from 8:00 – 9:30 p.m. The Lenten Classes will begin immediately after the Taizé service. Please contact the church office to register.

Dr. Baxter will present a DVD-based study “Victory and Peace or Justice and Peace?” by preeminent historical Jesus scholar, John Dominic Crossan. Lecture topics are: “Justice and the World: What is the Character of your God?”, “History and Jesus: What is the Content of your Faith?”, “Worship and Violence: What is the Purpose of your Prayer?”, “Resurrection and Community: What is the Function of your Church?” Discussion will follow each lecture.

Rev. Dan Spike and Ms. Melissa Armstrong-Hansche will present a *Faith Lessons* DVD-based series “In The Dust of the Rabbi.” Filmed on location in Israel, this study takes participants on a sweeping journey through Galilee and Asia Minor. By weaving together the Bible’s fascinating historical, cultural, religious and geographical contexts, teacher and historian Ray Vander Laan reveals keen insights into Scripture’s significance for modern believers.

**Presbyterian Church of  
Barrington  
Vision Statement**

*Created by God as a welcoming, caring family of faith, we...*

*...worship God joyfully, guided and challenged by Scripture and the proclamation of Christ's gospel;*

*...serve those in need, inspiring and equipping one another to respond to God's call;*

*...support each individual's journey of faith through lifelong learning, Christian fellowship and prayer; and*

*...share this spiritual home with all, drawing others to faith in Jesus Christ and reflecting the everlasting love of God.*

**Thanks For Your Help:** Jack and Jinny Train and Sandi Crewe for assembling the January Carillon.

**Becoming a Church Member**

We invite you to become a member of our congregation. People who have not made a decision about joining, but would like to know more about the church, are invited to come to services, participate in activities and discuss membership with **Dr. Curtis Baxter**. He can be reached at the Church Office at 847-381-0975.

Dear Friends in Christ,

There are two kinds of churches: answer churches and journey churches. We are a journey church that realizes there is more hope, wisdom and strength in the quest for God than in the worship of our own small definitions of God.

Below are two quotes that might help us understand that we should never settle for a limited definition of a limitless God. In *The Presbyterian Outlook*, David Duncan, novelist and naturalist argues:

*"God" is a word that should not be defined. He says: "God is Unlimited. Thought and language are limited. God is the fathomless but beautiful Mystery Who creates the Universe, and you and me; and sustains it and us every instant, and always shall. The instant we define this fathomless Mystery, it is no longer fathomless. To define is to limit. The greater a person's confidence in their definition of God, the more sure I feel that their worship of "Him" has become the worship of their own definition.*

In *Weavings*, Marilyn Chandler McEntyre says that she is troubled by bumper stickers that read:

*"The Bible said it. I believe it. That settles it." If you can't handle paradox, get out of the pulpit or if you can't handle metaphor, get out of the ministry. The Bible is arguably the most mysterious, strange, challenging, complex book in the world, and should be approached with a sense of mystery, not wooden literalism. Reading the Bible should be considered an invitation: "Come," it says over and over. "Come to me and I will give you rest. Enter it. Sit and eat. Dwell. Consider. Trust. Look again." The ground of all theology lies in that invitation. First and last, it is a proposal, sent from heaven and that summons us into a relationship more intimate than any we can know this side of heaven."*

Duncan and McEntyre's thoughts might take a lifetime to consider in order to come to a personal statement of faith.

Pax,  
**Curt Baxter**

## Stephen Ministry

### Witnessing and the Super Bowl

Jesus appeared to the disciples and they boldly told others of “witnessing” Christ’s return to earth. What a challenge this must have been. Can you imagine the reactions we would give if someone told us that today?

Through Stephen Ministry many have witnessed Christ’s presence in the healing of those who are in pain, have questioned God’s existence or finally feel at peace with life after months of crisis.

A Caregiver wrote, “Witnessing God’s work in your life, his persistence and patience while you allowed the Holy Spirit to restore your faith, has been an opportunity for significant growth for me in my faith life too.”

Yes, care receivers are the focus of every Stephen Ministry relationship, but each and every Stephen



Minister witnesses the power of God in their lives and the lives of their care receivers.

A former Super bowl coach and now a Stephen Minister, Don Arnsperger said the similarities between coaching a professional football team and the Stephen Ministry program is that “both build confidence and take teamwork. Each opportunity to care is a new challenge, a new experience, just as each game is. I find serving as a Stephen Minister very rewarding. It’s an opportunity to work with people and really help them.”

This fall is the next opportunity to be trained as a Stephen Minister. Please talk to a Stephen Minister about this program, or contact **Anna Armstrong** for an application.

## ChristCare

### Caring Hearts – Faithful Servants

#### Living our Vision

Our church’s vision statement identifies us as a caring family of faith. How do ChristCare groups help bring this vision to reality? A ChristCare group helps by providing a forum to build fellowship, to grow spiritually, and to share Christ’s love in a tangible way. By meeting regularly, ChristCare group members support each other in their lives and faith journeys and reach out in the spirit of Christ’s love to the congregation, community and the world.



Are you seeking an experience that is enjoyable, energizing, and rewarding? Are you seeking an experience that will help realize our vision?

We ask you to give one of our existing ChristCare groups a try. Please contact the church office and ask to speak to one of our group leaders, Gerry Nadig, Bob Florio and Lukass Franklin, or one of our ChristCare equippers, Karen Tobin, Dan Spike and Chip Kyle. The risk is low and the reward is high.

## Barrington Presbyterian Women

### February Meeting



**PRESBYTERIAN  
WOMEN**

Our next meeting will be on February 1, coffee at 9:15 a.m.; meeting at 9:35 a.m. All women of the congregation are invited to attend. The Valentine Care Packs will be assembled in Fellowship Hall at 10:45 a.m., following the BPW meeting. All are welcome to help us get the packs in the mail! Thank you so much for your thoughtfulness and generosity! Sandi Crewe, Nancy Nadig, Donna Sculley

### Morning Bible Study

BPW Bible Study meets the first Wednesday of the month in the Parlor. We are using the Horizons Bible Study book, *In the Beginning, Perspectives on Genesis*, which is available in the church office. **Susan Raaths** is the Coordinator. All women of the congregation are encouraged to participate. Come on February 7 at 9:30 a.m. for coffee; Bible Study begins at 10:00 a.m.

### G.T.I.F.

The next GTIF (Growing Together in Faith) Women's Bible Study Group will meet on Tuesday February 20 at 7:00 p.m. The group normally meets on the third Tuesday evening of the month in the home of a member. We are using a new study book, *At Table With Jesus*. All are welcome, please join us! Contact **Jill Minner** for more information.

### Women With Aging Parents

The group meets the second Friday of the month (February 9) at 9:30 a.m. at the home of **Marge Slocum**.

### Book Club

Book Club meets every other month (starting in September), on the third Thursday at 1:00 p.m. at the home of a member. Our next meeting will be held on March 15, 2007, at 1:00 p.m. The book to be discussed is *The Glass Castle* by Jeanette Walls. For more information, you may contact **Alice Buchholz**.

### BPW Retreat, March 9 – 11, 2007

*God's Story, Our Story.* George Williams College, Aurora University, Williams Bay, Wisconsin

Mail this form to Susan Raaths, with your \$165 check, **made payable to BPW**, by February 28, 2007.

Name: \_\_\_\_\_

Address: \_\_\_\_\_

City: \_\_\_\_\_

State: \_\_\_\_\_ Zip: \_\_\_\_\_

E-mail Address: \_\_\_\_\_

Phone: \_\_\_\_\_

Cell Phone: \_\_\_\_\_

**Important! We need your cell number in case of emergency during the weekend.**

Roommates (if known) Maximum 3 to a room

1. \_\_\_\_\_

2. \_\_\_\_\_

Transportation:

I need a ride.

I can provide a ride for:

1    2    3    4    5

Special Needs (mark all applicable)

Handicapped accessibility

Dietary restriction: \_\_\_\_\_

Allergy: \_\_\_\_\_

Other: \_\_\_\_\_

Spiritual Retreats

This is my first spiritual retreat ever

This is my first BPW spiritual retreat

I've attended prior BPW spiritual retreat(s)

I would like to help by:

Greeting ladies upon arrival Friday night

Bringing items as assigned by the retreat committee

Leading small group discussion

Participating in special music

Leading prayer before a meal

**Linda McGurer**

**Marge Slocum**

## Deacons

### Condolences to:

**John and Janet Jones** and family upon the death of John's mother, Lillian Jones, on December 25;  
**The family** of Jeanne Palmer (Mrs. Bert) upon Jeanne's death in Arizona on January 11.

### Deacon's Corner, Jim Myers

Serving as a Deacon encompasses a multitude of duties such as welcoming new visitors, delivering meals to the homes of those in need, sending birthday cards and participating in the Advent Dinner.



Of all the activities of which I have performed in my two years as a Deacon the most rewarding is serving Extended Communion. This responsibility of visiting the homes of those members of the congregation who do not find it easy to travel to church is both humbling and inspiring. Being able to provide a connection to the church for those who are homebound carries with it the ability to brighten up the day of those whom we serve. The conversation, fellowship and genuine warmth I have felt as I have participated in these extended services is unparalleled.

## Mission

### NEW ORLEANS REVISITED

The Mission Committee is pleased to announce that the "Lend a Hand" Mission Team will return to New Orleans April 14-21 to assist our fellow citizens with the rebuilding of their homes and city. New participants are encouraged to contact **Denny McGurer** or **Mark Layne** for specific details (cost, flight & housing arrangements, skill inventory, etc.)

Our host will again be the First Presbyterian Church of New Orleans and Dr. Cliff Nunn. Should you like to review the recently produced DVD on our October 2006 New Orleans mission trip, just contact Denny or Mark. Join up today for this special opportunity to be witness to the Lord's word.

### Loaves and Fishes Ministry

Thank you for your continued support of the Carpentersville F.I.S.H. Food Pantry via our "Loaves And Fishes" ministry. You may bring food and toiletry items to church and put them in the baskets which are located in the Narthex. Non-food items needed are diapers, cleaning and laundry products, paper products and personal grooming items (toothpaste and toothbrushes, soap, etc.). Gerry Nadig has been taking the items to F.I.S.H. on a weekly basis. If you would like to help with this service, please contact **Gerry**,

### Towels Needed for Homeless Shelter

One of our St. Gregory scholarship graduates, Delia Ramirez, works at a men's homeless shelter in

Humboldt Park and reports that they are in desperate need of used towels for their shower facilities. If you have towels to contribute, please put them in the large blue boxes in the front hall. They will be much appreciated.

### Spring Food Drive

Bags for your Food Drive donations will be handed out on Sundays, March 18 and 25. The Mission Committee will collect the filled bags on April 1, Palm Sunday. In addition to canned and packaged food items, paper products and toiletries are greatly appreciated. A list of suggested items will be attached to the bag. The list includes: Toothpaste, Toothbrushes, Shampoo, Soap, Paper Towels, Napkins, Toilet Paper, Diapers, Potato/Pasta Mixes, Canned Fruits or Veggies, Rice, Dried Beans, Coffee, Tea, Cocoa, Canned Juices, Juice



Boxes/Mixes, Canned Meats, Fish, and Soups, Sugar, Flour, Cereal, Gelatin and Pudding mixes.

Watch for the 2-for-1 sales - makes your contribution dollars go much further. Please mark your calendar for Monday, April 2; we will be taking the filled food bags to FISH in Carpentersville and to Christopher House in Chicago. If you would like to help, please contact **Gerry Nadig**. The Mission Committee thanks you for your participation

## Christian Education

### When Can You Disciple?

We are beginning to plan for next fall's DISCIPLE Bible study groups. DISCIPLE is a program that takes you through the Bible for the purposes of deepening your faith and equipping you to live as a disciple of Jesus.

Studying the Bible is meant to lead to change and growth – and DISCIPLE gives you the structure to make that happen. We learn history, context, and what the Biblical story means to us today.



DISCIPLE Bible study groups meet once a week from the end of August to mid-late May. To give us some information for planning, let us know:

I WOULD BE IN A DISCIPLE GROUP THAT MEETS:

- ON SATURDAY MORNINGS
- ON SUNDAY AFTERNOONS
- ON SUNDAY EVENINGS
- ON A WEEKNIGHT
- ON A WEEKDAY

I WOULD BE INTERESTED IN A SHORT-TERM DISCIPLE BIBLE STUDY THAT MEETS FOR 8 WEEKS IN THE SUMMER

Name \_\_\_\_\_

Phone \_\_\_\_\_

We will base our decisions about when to hold the groups on your responses, so please pray about it and turn this interest form into the office.

Questions? We love to talk about DISCIPLE, so feel free to ask Curt Baxter, Becky Bosarge, or any of the other 70 people who have participated in DISCIPLE! Look for an informational table later in the spring.

### Adult Education, Sundays, 10:15 a.m., in the Parlor

**February 4**, DVD program, Historical Jesus. On the first, fourth and fifth Sundays, our DVD series will address "The Historical Jesus." Professor Bart Ehrman will explore from a scholarly perspective, using all available sources, what Jesus was really like, what he really said and did, and what conclusions modern scholars have drawn about him in the context of the time in which he lived.

**February 11**, DVD program, Historical Jesus

**February 18**, Dr. Clark Barshinger will present a series entitled "Christian Purposes and Challenges in Act II of Life." This series addresses stages of life from age forty upward, with a Christian approach to challenges and opportunities during this time of life.

**February 25**, DVD program, Historical Jesus

### 2007 Men's Retreat "Discovering the Wise Man Within" April 27-29, 2007

Planning is under way for the 2nd Annual PCB Men's Retreat. It's time for the men of the church to mark your calendars for this weekend experience. The retreat will provide an opportunity to escape your busy lives and experience a great weekend of sharing, male bonding and self-reflection...just ask those who attended last year!

Dr. Ron Miller, chair of the Religion Department at Lake Forest College, co-founder of Common Ground and author of numerous books and articles, is back to lead and facilitate the weekend's activities.

The retreat will be at George Williams Campus of Aurora University, Williams Bay, Wisconsin - a beautiful setting for this weekend escape. The program begins around 7:00 p.m. on Friday, April 27 and will wrap-up by late morning on Sunday, April 29. Should you have any questions or to RSVP please contact **Chip Kyle**.

## The Historical Jesus Then and Now

Dear Friends in Faith,

This is the third in a five part series of articles Linda Long, Chairperson of the Adult Education Committee, asked me to write as a prelude to the lecture series it is sponsoring on April 20 & 21, 2007. The series, "The Historical Jesus Then and Now: The Challenge of the Kingdom of God," brings John Dominic Crossan, one of the world's leading biblical scholars, into our midst for two days of lecture and discussion.

"Ask, and it will be given to you; seek and you shall find; knock and it will be open for you," The Historical Jesus.

My pager went off late Christmas Eve morning. Could I come to the ICU in Woodstock and talk to a patient who was sick unto death, yet so afraid to die that she refused to go to sleep? During the forty-five minute drive from Barrington, I kept asking Jesus just what I might say to this woman who had refused any more life prolonging medical treatment, and who was also refusing to die.

Her parents and children, brothers and sisters, nieces and nephews were gathered around her in silence, her suffering clearly profound. Yet, she was refusing all pain medication. Her family's suffering of her could hardly be contained; only the silent prayers of their grieving hearts seemed to sustain.

The priest, nurse reported, had been there the day before and spoken to her of Jesus. After which she refused even more adamantly to sleep. Jim, a most gentle and compassionate hospice nurse, had been there the day before the priest; she had sent him packing along with any notion that she be relieved of her intense suffering. The nurse is telling all this and I am desperately seeking Jesus. Where shall we go, Jesus, with this woman that she has not already refused to follow?

I listened then for awhile to her sons: about her life and illness, suffering and rage against the dying of her light.

Alone with her in the room, now empty of her family's pain, I knocked on Jesus' door. Her suffering was so intense; if Jesus did not enter in, there was nothing I could bring. One hand on her forehead and another holding hers, "Does the pain connect you to your life?" She nodded her head yes. "Are you afraid that if you die you will be alone?" "Yes," she said with all the strength she had. Words came from me about loved ones already gone and waiting for her when she was ready to join them around Jesus' table. These were not my questions, my words. Somewhere deep within, the Jesus of Faith opened my heart, and soul, and mind; the Kingdom of God became real and dwelled among us. The promise of the Historical Jesus, as 1 Timothy 1:15 proclaimed in faith, proved completely reliable and worthy of universal acceptance.



Within the hour, she joined Jesus through the open door: in prayer, with family gathered having spoken to her of the love of long dead grandparents who were happily welcoming her home again in love.

Please do not miss the opportunity to come to know better the promises of the Historical Jesus.

God's best to you,

Dorothy S. Symonds, M. Div.,  
Member, Adult Christian Education Committee.

## Youth Christian Education

### 7th/8th Grade WhirlyBall Lock-in

February 9—10

What is Whirlyball? It is an amazing sport that involves jai alai, basketball backboards and bumper cars. Don't miss it! Friends are welcome. Watch your mail for details and forms.

### EATING CHOCOLATE FOR A GOOD CAUSE!



(Now that we have your attention)

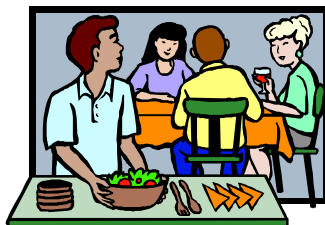
**DON'T FORGET** to return your M&M tubes filled with quarters by February 11th in the M&M bin

at church. This is a fundraising effort in support of the 2007 Youth Mission Trip to the flood plains of West Virginia. In case you already ate your M&Ms and threw away the tube – don't worry- the quarters add up to approximately \$14.

### 5th/6th Grade Parent/Child Dinner and Class—What Presbyterians Believe

February 25, 5:00-7:00p.m. class

Join us as we share a meal together before beginning to explore what Presbyterians believe about worship, scripture and everyday faith. We will begin to learn about the Reformation and how that still defines us today. Through games, music and other fun activities, we will learn more about our religious identity.



## As A Family:

Ash Wednesday February 21

Season of Lent

Lent is a season of preparation. Historically in the Church, it was the time set aside for new converts to prepare for baptism or for backslidden Christians to do penance and be restored. The forty days prior to Easter were set aside for fasting, prayer and self-examination; however, Sundays were to be treated as "little Easters" when the fast and penance could be set aside to celebrate Jesus' victory. Hence there are really 46 days in Lent because Sundays are not counted.

Ash Wednesday marks the beginning of the time of preparation. In some churches, last year's palms are burned, mixed with oil and the mixture placed on the foreheads as a sign of humility, specifically the extreme suffering that Jesus experienced on the cross. The Sunday before Easter Sunday is designated as "Palm Sunday" to commemorate Jesus' triumphant entry into Jerusalem and the beginning of "Holy Week" with the events that led up to the crucifixion. "Maundy Thursday" calls for a celebration of the institution of Holy Communion that stems from the Passover Seder Jesus shared with His disciples. "Good Friday" is a paradoxical celebration of Jesus' death: while the suffering of crucifixion can hardly be called "good", the atonement for sin and the gift of salvation through Christ's sacrifice is "Good News" for the Christian. The waiting of Lent is finally over with the arrival of Easter Sunday and the joy of the Resurrection.

Lent is a time of devotion in which we focus on God and our relationship with God. Unlike Advent, where we tend to gather with family and friends, in Lent we seek quiet, so that we can listen for God. What will your family do to listen for God? Think about setting aside a time for reading Bible stories or listening to music or starting a prayer journal. Children learn what they see. You are a very important role model in their spiritual lives. Help them to establish a relationship with God this Lent, or strengthen the one that they already have. Watch the Carillon and bulletin for opportunities.

## Fellowship

### Kitchen Kabinet

Kitchen Kabinet is a fellowship group comprised of retirement age men. They meet for lunch, conversation, discussion, and programs on the second Tuesday of the month, usually at The Garlands. In June and December, they invite their favorite ladies for a special luncheon. The next meeting/lunch is February 12; this will **not** be at The Garlands; please contact **Bob Johnson** for more information. Guests are always welcome.

### Men's Fellowship Group

All men of the congregation are invited to participate in the Men's Fellowship Group. They meet on the third Thursday of each month for dinner and discussion. The host prepares a simple meal and chooses a topic for discussion. The next meeting is scheduled for February 15 at 6:30 p.m. **Tom Long** is the coordinator for 2007.

### Family Fellowship Group

Fellowship Group Makes Comeback

The PCB Fellowship Group had our first Monthly Social of 2007 on Saturday, January 13 with over 30 attending an early evening filled with tasty food (potluck), wonderful fellowship and best of all no formal meeting! We've decided to 'revive' this group in 2007 and are looking for anyone willing to share in this terrific social setting.

In the past the Fellowship Group has turned into an event planning committee often being assigned with the task of planning one or several events every month. The consensus is that in fact the 'fellowship' has been overcome by the tasks associated with the variety of events being planned.

This new Fellowship Group will be focused on the following 2 goals:

1. Create a social environment where couples, families and any PCB member can go to enjoy themselves on a monthly basis in a 'meeting-free' environment;
2. Focus on planning, communicating and executing 4 church wide social events.

Most of all we've created a group that allows PCB members and also prospective members the great

opportunity to develop new and strengthen friendships outside the traditional church service and business meeting atmosphere.



We are inviting anyone interested to attend our next Monthly Fellowship Social on Saturday, February 10 at the home of Scott and Phyllis Buchta, 660 Masland Court, North Barrington. To RSVP or if you're interested in the PCB Fellowship Group and/or would like more information, please contact **Matt or Allie Batt**.

### Annual Card Party - Save The Date

The PCB Annual Card Party will be held on Saturday, April 14 at The Wool Street Grill in Barrington. Please mark your calendars immediately and start looking for sign-up tables in Fellowship Hall between services in February. Space is limited so be sure and sign-up for this terrific evening of spirited competition, great food and wonderful fellowship!

### Celebration of Faith Gala

Saturday February 3, 2007

6:30 p.m. to midnight

Makray Memorial Golf Club  
in Barrington

We hope you have made your reservations to join your church family for an evening of adult fellowship, dinner, dancing to a live band and FUNdraising. Proceeds benefit the Presbyterian Church of Barrington and a local charity.

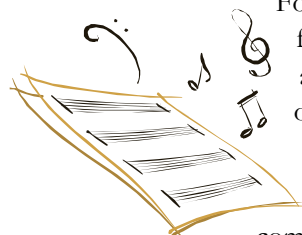
### Membership And Outreach

Reaching out to visitors and new members is so important as we grow our church family. Sometimes we are not sure if the person sitting next to us is a visitor or a member we have yet to meet. Either way it is important to greet them and share a few moments with them. If they are a visitor please take them personally to Fellowship Hall and introduce them to our pastors and others at coffee. In a way we ALL are members of the membership committee, reaching out to those who are searching for a new church home. Our first impressions on them are so important. We don't want to miss the opportunity to share what we at the Presbyterian Church of Barrington have to offer.

Music

Sundays At Four Concert

Schubert's Mass in G  
 Sunday, February 25, 4:00 p.m.



For the third concert in the Sundays-at-Four series, the Sanctuary Choir will perform Schubert's famous liturgical piece, Mass in G. The choir will be joined by professional instrumentalists and soloists to mount this great work, which was written when Schubert was only 16 years old! (What were you doing when you were that age?!)

Schubert was born in Vienna, Austria in 1797, and after a brief music education began composing. Although he only lived to be 31, he managed to be quite prolific, writing seven symphonies, numerous masses and liturgical music, a large body of chamber and piano music, and over 600 art songs, which are some of the most beloved German Lieder in the repertoire. His Mass in G typifies many of his musical gifts: his gift of melody, his flair for drama, and his well of creativity.

Opening the Schubert program will be the Children's Choir, performing An die Musik (To Music). The Sanctuary Choir will also perform his setting of Psalm 23 and the strings will play the opening movement of his String Quartet in E Major. During the concert there will be childcare available and older children are welcome to attend the concert and sit in the balcony with an adult. Following the concert there will be a reception hosted by members who went on the New Orleans mission trip. Admission to the concert is free, but donations will be accepted to benefit the New Orleans relief effort.

Music in Worship during February

February 4

Anthem	Seek to Serve	Lloyd Pfautsh
Offertory	Let All Mortal Flesh Keep Silent	Gustav Holst
Communion	And Still the Bread Is Broken	David Ashley White

February 11

Anthem	Blessed Are the Pure In Heart	Walfred Davies
Offertory	Simple Gifts	arr. Kevin McChesney
	Bell Choir	

February 18

Anthem	This Little Light of Mine	Keith Hampton
Offertory	Beautiful Savior	F. Melius Christiansen

February 25

Anthem	He Shall Give His Angels Charge Over You	Richard Hillert
Offertory	Claire Seizovic, violin	

## Parish Life

### Chancel Guild Sunday Flowers

If you would like to dedicate the flowers for a particular

Sunday in honor of a loved one, or to celebrate a special occasion, please fill out this form and send it with your check for \$30 to the church office.

Make the check payable to The Presbyterian Church of Barrington, memo "Sunday Flower Dedication".



email: \_\_\_\_\_

Date: \_\_\_\_\_

Amount of donation: \$ \_\_\_\_\_

Dedication:

Name of donor(s)

\_\_\_\_\_

\_\_\_\_\_  
 \_\_\_\_\_  
 \_\_\_\_\_  
 \_\_\_\_\_

Phone: \_\_\_\_\_

## Church Administration

PRELIMINARY Financial Results for the Operating Fund  
 For the 12 months ended December 31, 2006

	<b>Actual YTD</b>	<b>Annual Budget</b>
Pledges	\$460,724	\$467,264
Prepaid Pledges	\$110,266	\$110,266
Open Plate giving	57,165	34,000
Easter/Christmas	10,336	10,000
Other Misc Income	8,859	8,500
One-time Gifts	42,650	42,900
<b>Total estimated income</b>	<b>690,000</b>	<b>672,930</b>
Amt from reserves needed	25,000	52,892
<b>Estimated expenses</b>	<b>\$715,000</b>	<b>\$725,822</b>



The preliminary results for the 2006 fiscal year are more favorable than anticipated: thanks to all who helped bring our donations higher than what was pledged! We also

experienced savings on costs, due in part to Trustees, staff, and members of Session doing their best to control and defer unnecessary expenditures. Other savings occurred in areas such as utility costs, where budgeted increases in prices were not as severe as expected. Detailed financial information for 2006 will be part of the Church's annual report, to be mailed out to members in February. Important work of the church that is recorded in funds other than operations shown above, such as Nueva Esperanza, our H.O.P.E. fund, Building Fund, and Memorials, along with giving that is sent directly to various Missions of the church, will be reviewed. This report, as well as the 2007 budget, will be presented at the Congregational Meeting scheduled at 10:00 a.m. on February 25th, in the Sanctuary.

## Worship Schedule

- Feb. 4** Dr. Baxter Preaching ..... 9:00 a.m. and 11:00 a.m.  
*Let's Go Fishing*  
Readings: Isaiah 6:1-8; Psalm 138; 1 Corinthians 15:1-11;  
Luke 5:1-11.
- Feb. 11** Dr. Baxter Preaching ..... 9:00 a.m. and 11:00 a.m.  
*Living A Blessed Life*  
Readings: Jeremiah 17:5-10; Psalm 1; 1 Corinthians 15:12-20;  
Luke 6:17-26.
- Feb. 18** Mr. Spike Preaching ..... 9:00 a.m. and 11:00 a.m.  
*A Rich Creation*  
Readings: Genesis 1:1-2:4a; Psalm 19; Colossians 1:15-20;  
Mark 12:28-34.
- Feb. 25** Dr. Baxter Preaching ..... 9:00 a.m. and 11:00 a.m.  
*Do Angels Watch Over us?*  
Readings: Deuteronomy 26:1-11; Psalm 91:1-2, 9-16;  
Romans 10:8b-13; Luke 4:1-13.



PRESBYTERIAN CHURCH OF BARRINGTON  
6 Brinker Road, Barrington, IL 60010  
847-381-0975 [www.pcbarrington.org](http://www.pcbarrington.org)

Non-Profit Org.  
U.S. POSTAGE  
PAID  
Barrington IL 60010  
Permit No. 55